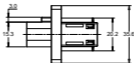
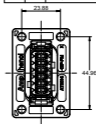
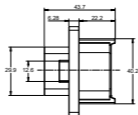
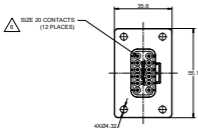


REVISIONS					
REV	ECO	DESCRIPTION	DATE	BY	APPR
A1	-	RELEASE NEW DRAWING	Sep/28/23	LUCAS	TOMMY
A2	-	UPDATES THE DRAWING VIEW	Feb/1/25	LUCAS	TOMMY



NOTES: UNLESS OTHERWISE SPECIFIED

- MATERIAL:
HOUSING: THERMOPLASTIC;
SEAL: SILICONE RUBBER; COLOR: GREEN
- MODIFICATIONS: FRONT PANEL MOUNT,NORMAL DIAMETER SEAL
- SPECIFICATIONS:
3.1 OPERATING TEMPERATURE: -55°C TO +125°C.
3.2 DIELECTRIC WITHSTANDING VOLTAGE: LESS THAN 2 MILLIAMPS CURRENT LEAKAGE @ 1500 VOLTS AC.
3.3 INSULATION RESISTANCE: 1000 MEGOHM MIN @ 25°C.
3.4 MOISTURE RESISTANCE: IP67 & IP69K (MATED CONDITION).
3.5 MATING CYCLE DURABILITY: 100 CYCLES
3.6 RoHS COMPLIANT
- MATING PART:ATM06-125X* (X = A,B,C,D KEYS,*=ALL MODIFACATION)
- ALL DIMENSIONS ARE FOR REFERENCE USE ONLY.

△ CONTACT SIZE AND WIRE RANGE:

CONTACT SIZE	MIN. INSUL. O.D.	MAX. INSUL. O.D.	TYPICAL WIRE RANGE
20	1.35 mm (.053 in)	3.05 mm (.12 in)	16-20 AWG (1.0-0.5mm ²)

ATM04-12Px-PM61		DESCRIPTION	
PART NUMBER		DESCRIPTION	
QUANTITY		MATERIALS LIST	
1. SEE DRAWING FOR DIMENSIONS 2. THIS DRAWING IS FOR REFERENCE USE ONLY 3. ALL DIMENSIONS ARE IN MILLIMETERS UNLESS OTHERWISE SPECIFIED 4. ALL DIMENSIONS ARE IN MILLIMETERS UNLESS OTHERWISE SPECIFIED 5. ALL DIMENSIONS ARE IN MILLIMETERS UNLESS OTHERWISE SPECIFIED		MATERIALS LIST 1. SEE DRAWING FOR DIMENSIONS 2. THIS DRAWING IS FOR REFERENCE USE ONLY 3. ALL DIMENSIONS ARE IN MILLIMETERS UNLESS OTHERWISE SPECIFIED 4. ALL DIMENSIONS ARE IN MILLIMETERS UNLESS OTHERWISE SPECIFIED 5. ALL DIMENSIONS ARE IN MILLIMETERS UNLESS OTHERWISE SPECIFIED	
△ CONTACT SIZE AND WIRE RANGE: 1.35 mm (.053 in) - 3.05 mm (.12 in) 16-20 AWG (1.0-0.5mm ²)		Amphenol Size Systems - www.amphenol.com 6470 Shirley Drive Clinton Township, MI 48036	
12 POS. FRONT MOUNT RECEPT. W/ FLANGE, PIN PANELMATE™ ATM KEYED, STD SEAL		B C- ATM04-12Px-PM61 A2	
NONE		1 of 3	

