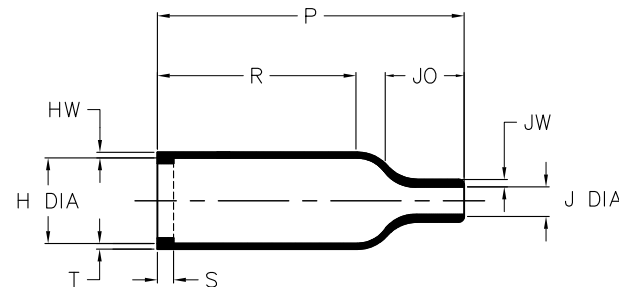


REVISIONS		
LTR	DESCRIPTION	DATE
B	REVISED PER ECO-10-020693	10/12/2010



AFTER UNRESTRICTED RECOVERY

1. ALL DIMENSIONS ARE IN $\frac{\text{INCHES}}{[\text{MILLIMETERS}]}$

2. DIMENSIONS APPEARING IN TABLE
ARE AS FOLLOWS:
- a - AS SUPPLIED
 - b - AFTER UNRESTRICTED RECOVERY

3 COATING (ADHESIVE): IS OPTIONAL
AS SUPPLIED DIMENSIONS APPEARING
IN TABLE ARE FOR UNCOATED PARTS.
WHEN COATING IS ADDED, ENTRY
DIAMETER WILL BE REDUCED BY .06 [1.5] MAX.

4. ORDERING INFORMATION

ORDERING INFORMATION

	202A111	-XX	-G07	/XXX	/0
BASE PART NUMBER	_____	_____	_____	_____	_____
MATERIAL DASH NUMBER	_____	_____	_____	_____	_____
-3	POLYOLEFIN, SEMI RIGID (RT-301)				
-4	POLYOLEFIN, FLEXIBLE (RT-1304)				
-12	FLUORO ELASTOMER, FLEXIBLE (RT-1312)				
-25	ELASTOMER, FLUID RESISTANT (RW-2070)				
MODIFICATION NUMBER	_____	_____	_____	_____	_____
ADHESIVE SLASH NUMBER	_____	_____	_____	_____	_____
SEE COMPATIBILITY CHART BELOW					
COLOR DESIGNATOR	_____	_____	_____	_____	_____

TABLE OF DIMENSIONS

PART DESCRIPTION	H		J		P	R	S	T	JO	JW	HW
	MIN a	MAX b	MIN a	MAX b	±10% b	±10% b	±10% b	±10% b	±10% b	±20% b	±20% b
202A111-X-G07 (X: -3,-4 OR -25)	<u>.67</u> [17]	<u>.31</u> [7,9]	<u>.67</u> [17]	<u>.09</u> [2,2]	<u>.98</u> [25]	<u>.55</u> [14]	<u>.12</u> [3,0]	<u>.04</u> [1,0]	<u>.24</u> [6,0]	<u>.07</u> [1,7]	<u>.05</u> [1,3]
202A111-12-G07	<u>.63</u> [16]	<u>.31</u> [8]	<u>.43</u> [11]	<u>.09</u> [2,2]	<u>.98</u> [25]	<u>.55</u> [14]	<u>.12</u> [3,0]	<u>.04</u> [1,0]	<u>.24</u> [6,0]	<u>.07</u> [1,7]	<u>.05</u> [1,3]

COMPATIBILITY CHART

MATERIAL DASH NO.	ADHESIVE (COATING) SLASH NUMBER	ADHESIVE (COATING) S NUMBER
-3	/42; /86; /180	S-1017; S-1048; S1030
-4	/42; /86; /180	S-1017; S-1048; S1030
-12	N/A	N/A
-25	/42; /86; /225	S-1017; S-1048; S-1206

UNLESS OTHERWISE SPECIFIED
DIMENSIONS ARE INCHES. METRIC
DIMENSIONS ARE IN BRACKETS.

DECIMAL TOLERANCES

DECIMAL TOLERANCES			
.XXX ±	0.005	[0.13	mm]
.XX ±	0.01	[0.25	mm]
.X ±	0.1	[0.50	mm]

ANGLE TOLERANCES

ANGLE TOLERANCE
X \pm 1 DEG.

TYCO ELECTRONICS RESERVES THE RIGHT TO AMEND THIS DRAWING AT ANY TIME. USER SHOULD EVALUATE THE SUITABILITY OF THE PRODUCT FOR THEIR APPLICATION.

© 1997-2010 Tyco Electronics Corporation. All rights reserved.

REVISÉ

UNGUYEN

APPROVED

DHURRELL



Tyco Electronics

Raychem Molded Parts
305 Constitution Dr
Menlo Park, CA 94025

TITLE

BOOT, STRAIGHT

	SIZE B
--	-----------

CODE IDENT. NO.	06090
-----------------	-------

DWG. NO.	
----------	--

202A111-X-G07

CUSTOMER DRAWING

DO NOT SCALE THIS DRAWING

SHEET 1 OF 1